

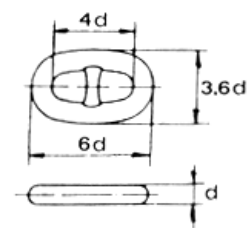
Eslabón alargado

Eslabón final

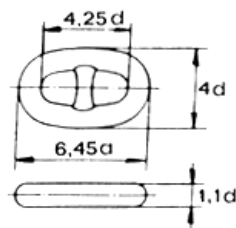
Cadena con concreto

| Código | ø d | | Eslabón normal | | Eslabón alargado | | | Eslabón final | | | U-2 Acero 490-640 N/mm ² A > 22 % | | |
|---------|------|---------|----------------|-------|------------------|-------|-------|---------------|-------|-------|--|---------------------|--------------------|
| | mm. | pulg. | A mm. | B mm. | C mm. | E mm. | F mm. | G mm. | H mm. | I mm. | Carga de prueba Kg. | Carga de rotura Kg. | Peso por metro Kg. |
| CCC0125 | 12,5 | 1/2 | 50 | 45 | 14 | 55 | 50 | 16 | 54 | 50 | 6.600 | 9.200 | 3,700 |
| CCC0145 | 14,5 | 9/16 | 57 | 52 | 16 | 62 | 58 | 18 | 61 | 58 | 8.200 | 11.600 | 4,900 |
| CCC0016 | 16 | 5/8 | 64 | 58 | 18 | 70 | 64 | 20 | 70 | 64 | 10.700 | 15.000 | 5,600 |
| CCC0175 | 17,5 | 11/16 | 70 | 63 | 19 | 77 | 70 | 21 | 76 | 70 | 12.700 | 18.000 | 6,900 |
| CCC0019 | 19 | 3/4 | 76 | 68 | 21 | 82 | 76 | 23 | 83 | 76 | 15.000 | 21.000 | 8,200 |
| CCC0205 | 20,5 | 13/16 | 82 | 74 | 22 | 90 | 82 | 25 | 89 | 82 | 17.500 | 24.000 | 9,500 |
| CCC0022 | 22 | 7/8 | 88 | 79 | 24,5 | 97 | 88 | 26 | 96 | 88 | 20.000 | 28.000 | 11,060 |
| CCC0024 | 24 | 15/16 | 96 | 86 | 26,5 | 102 | 96 | 29 | 104 | 96 | 24.000 | 33.000 | 13,180 |
| CCC0255 | 25,5 | 1 | 102 | 92 | 28 | 109 | 102 | 31 | 110 | 104 | 28.000 | 39.000 | 14,300 |
| CCC0027 | 27 | 1 1/16 | 108 | 97 | 30 | 119 | 108 | 32 | 117 | 108 | 30.000 | 42.000 | 16,580 |
| CCC0285 | 28,5 | 1 1/8 | 114 | 103 | 31 | 123 | 114 | 34 | 125 | 114 | 32.000 | 45.000 | 18,350 |
| CCC0030 | 30 | 1 3/16 | 120 | 108 | 33 | 132 | 120 | 36 | 131 | 120 | 37.000 | 51.000 | 20,280 |
| CCC0032 | 32 | 1 1/4 | 128 | 115 | 35 | 137 | 128 | 38 | 139 | 128 | 42.000 | 58.000 | 22,980 |
| CCC0033 | 33 | 1 5/16 | 132 | 119 | 36 | 143 | 132 | 40 | 144 | 132 | 44.000 | 62.000 | 24,300 |
| CCC0034 | 34 | 1 11/32 | 136 | 122 | 37 | 150 | 136 | 41 | 148 | 136 | 47.000 | 65.500 | 27,600 |
| CCC0036 | 36 | 1 7/16 | 144 | 130 | 40 | 158 | 144 | 43 | 157 | 144 | 52.000 | 73.000 | 30,650 |
| CCC0038 | 38 | 1 1/2 | 152 | 137 | 42 | 163 | 152 | 46 | 165 | 152 | 58.000 | 81.000 | 32,920 |
| CCC0040 | 40 | 1 9/16 | 160 | 144 | 44 | 171 | 160 | 48 | 174 | 160 | 64.000 | 89.500 | 36,340 |
| CCC0042 | 42 | 1 5/8 | 168 | 151 | 46 | 185 | 168 | 50 | 183 | 168 | 70.000 | 98.000 | 39,920 |
| CCC0044 | 44 | 1 3/4 | 176 | 158 | 48 | 190 | 176 | 52 | 191 | 176 | 77.000 | 108.000 | 43,680 |
| CCC0046 | 46 | 1 13/16 | 184 | 166 | 51 | 197 | 184 | 55 | 200 | 184 | 84.000 | 117.000 | 47,610 |
| CCC0048 | 48 | 1 7/8 | 192 | 173 | 54 | 205 | 192 | 58 | 209 | 192 | 91.000 | 127.000 | 51,700 |
| CCC0050 | 50 | 2 | 200 | 180 | 56 | 220 | 200 | 60 | 218 | 200 | 98.000 | 137.000 | 55,960 |
| CCC0052 | 52 | 2 1/16 | 208 | 187 | 58 | 225 | 208 | 62 | 226 | 208 | 106.000 | 148.000 | 60,400 |
| CCC0054 | 54 | 2 1/8 | 216 | 194 | 60 | 233 | 216 | 64 | 235 | 216 | 114.000 | 159.000 | 65,000 |
| CCC0056 | 56 | 2 3/16 | 224 | 202 | 62 | 241 | 224 | 68 | 244 | 224 | 122.000 | 171.000 | 69,760 |
| CCC0058 | 58 | 2 5/16 | 232 | 209 | 64 | 255 | 232 | 70 | 252 | 232 | 129.000 | 181.000 | 75,960 |
| CCC0060 | 60 | 2 3/8 | 240 | 216 | 66 | 259 | 240 | 73 | 261 | 240 | 138.000 | 194.000 | 81,100 |

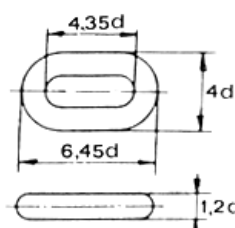
Accesorios para cadena con concreto



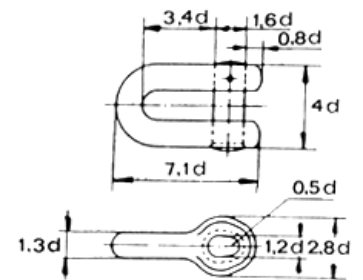
Eslabón normal
Código: ACCEN01



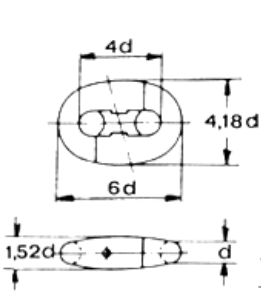
Eslabón alargado
Código: ACCEA02



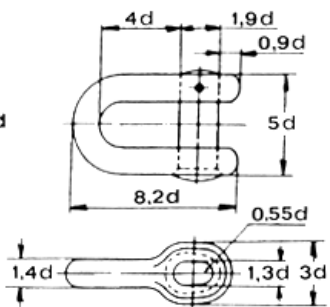
Eslabón final
Código: ACCEF03



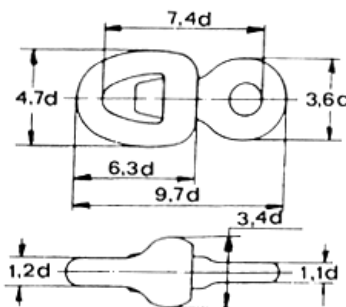
Grillete unión tipo D
Código: ACCGUD4



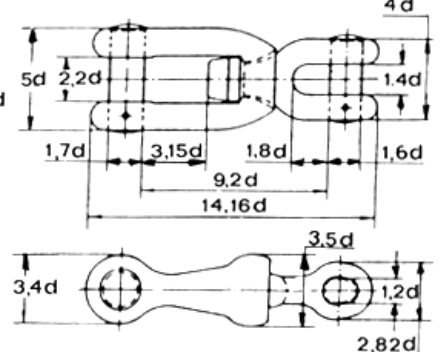
Grillete unión tipo Kenter
Código: ACCEUK5



Grillete ancla tipo D
Código: ACCGAD6



Grillete giratorio
ACCGG07



Grillete giratorio de ancla
Código: ACCGGA8